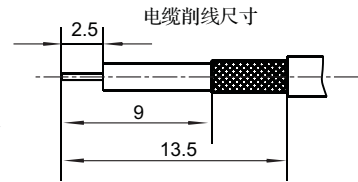
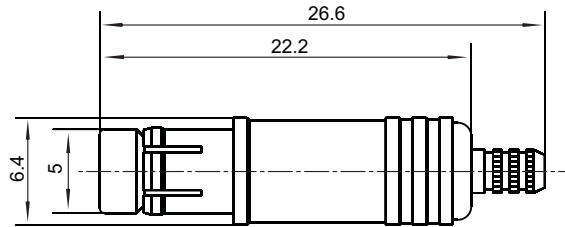


CS

系列射频同轴连接器
SERIES MCX RF COAXIAL CONNECTORS



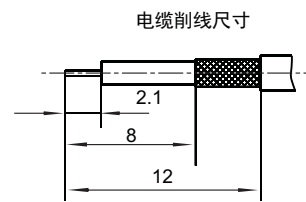
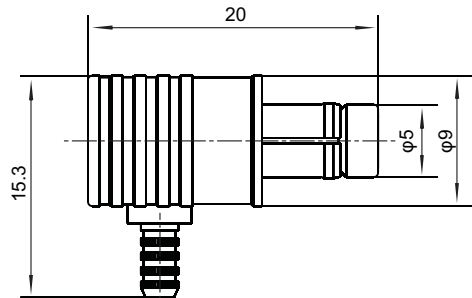
CS-J 3



配接电缆: GR316, RG179, SFF-50-1.5-1



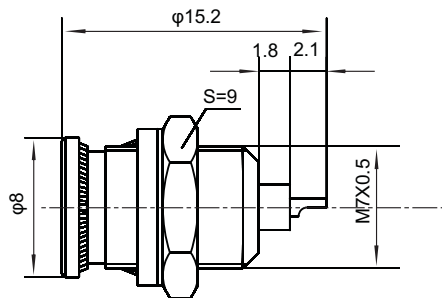
CS-JW3



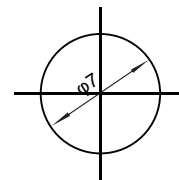
可配接电缆: GR316, RG179, SFF-50-1.5-1



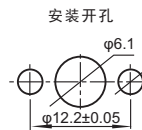
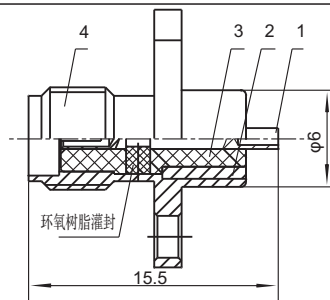
CS-KYD



安装开孔尺寸



CS-2KWHD



技术要求: 1. 装配前检验插孔分离力0.3-1.2N;
2. 符合Q/AN1001-2002产品标准;
3. 安装电缆: SFF-50-1.5-1, SYV-50-2-1

安装开孔尺寸

